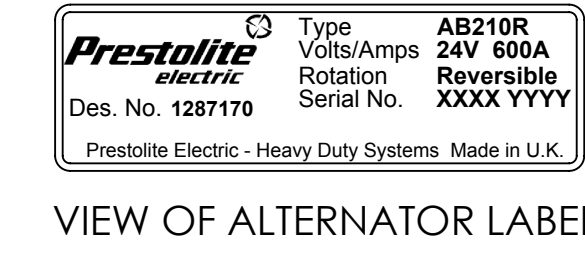
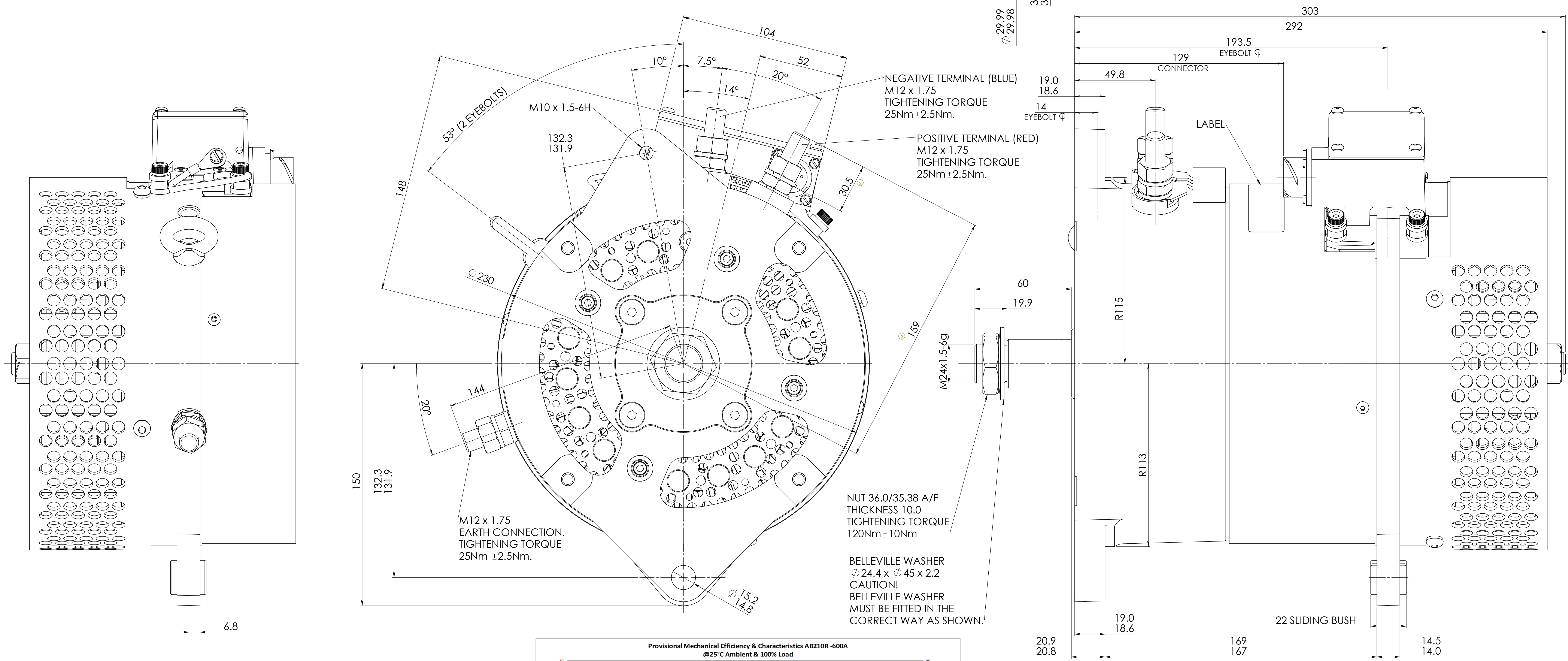


CHANGES

ISSUE No.	MOD No.	DATE	ISSUE No.	MOD No.	DATE
1	N0027	02-05-17	A	****	09-02-17
			2	N0047	26-07-17



VIEW OF ALTERNATOR LABEL



REF. EXPERIMENTAL DESPATCH No. 1290442 (S6956)

MATERIAL	/
HEAT TREATMENT	/
FINISH	/
DRAWN	I.S.
APPROVED	DATE 06-FEB-17
SCALE	1:1 DO NOT SCALE
0 10 20 30 40 50 60 70 80 90 100	
PROJECTION	
SUPERSEDES	
SIMILAR TO	
REF DRG No.	
FIRST USED ON	AB210R
CLASSIFICATION CODE No.	

DIMENSIONS IN MILLIMETERS
REMOVE SHARP EDGES
UNLESS OTHERWISE STATED TOLERANCES
LINEAR ± 2 ANGULAR ± 1

THIS DRAWING MAY ONLY BE ALTERED IF THE PART REMAINS INTERCHANGEABLE. IF NOT INTERCHANGEABLE A NEW DRAWING NUMBER MUST BE TAKEN.

COPYRIGHT

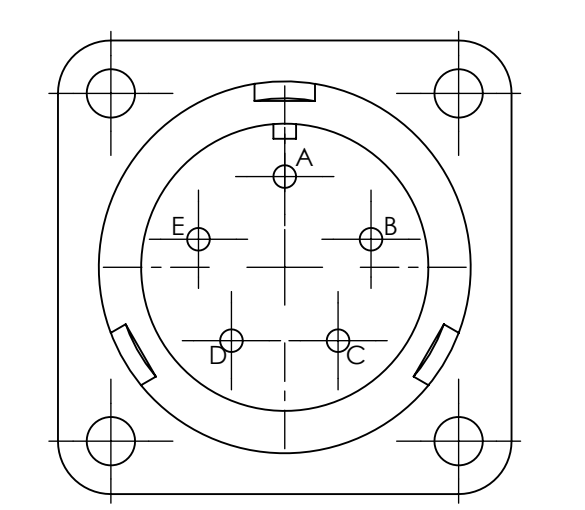
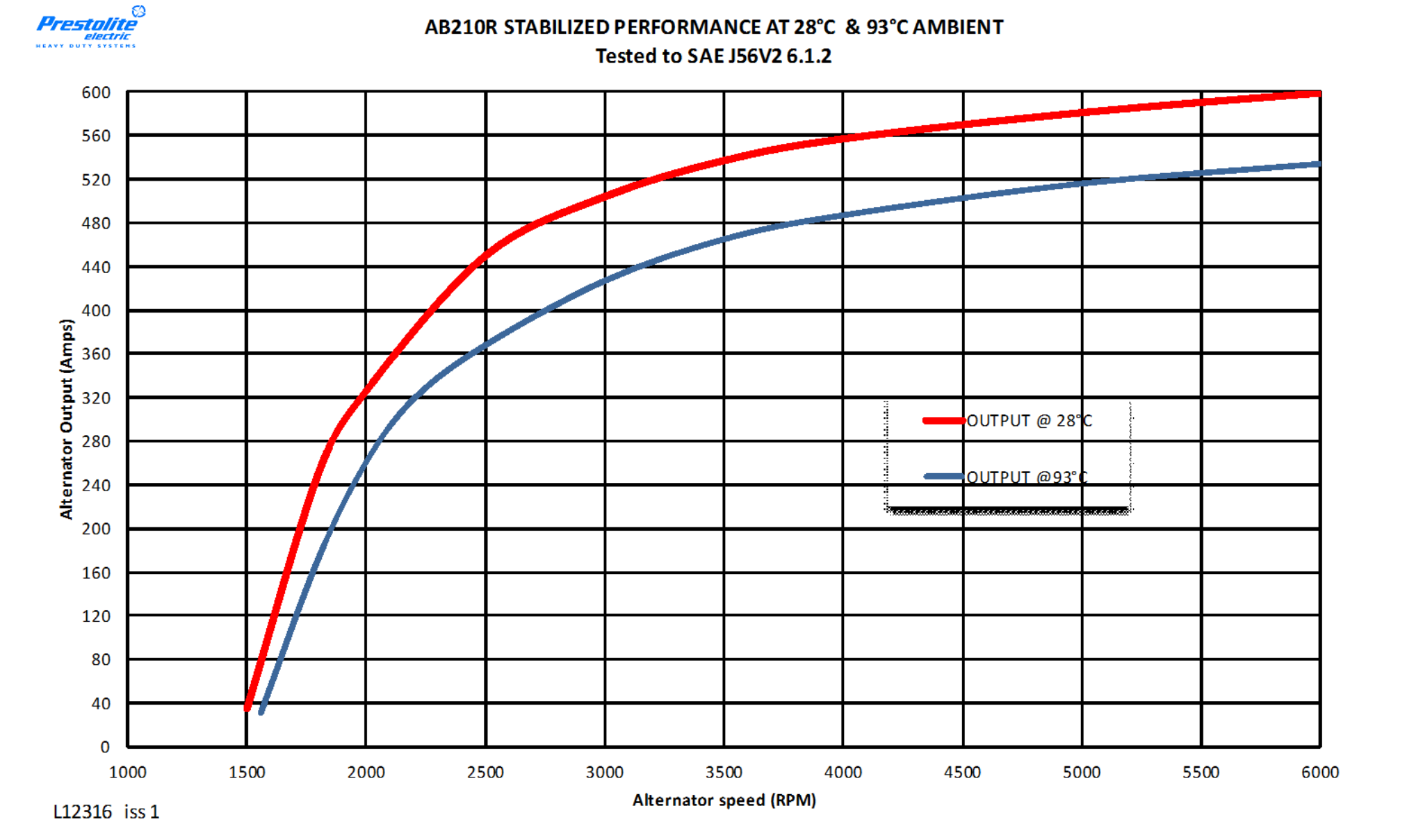
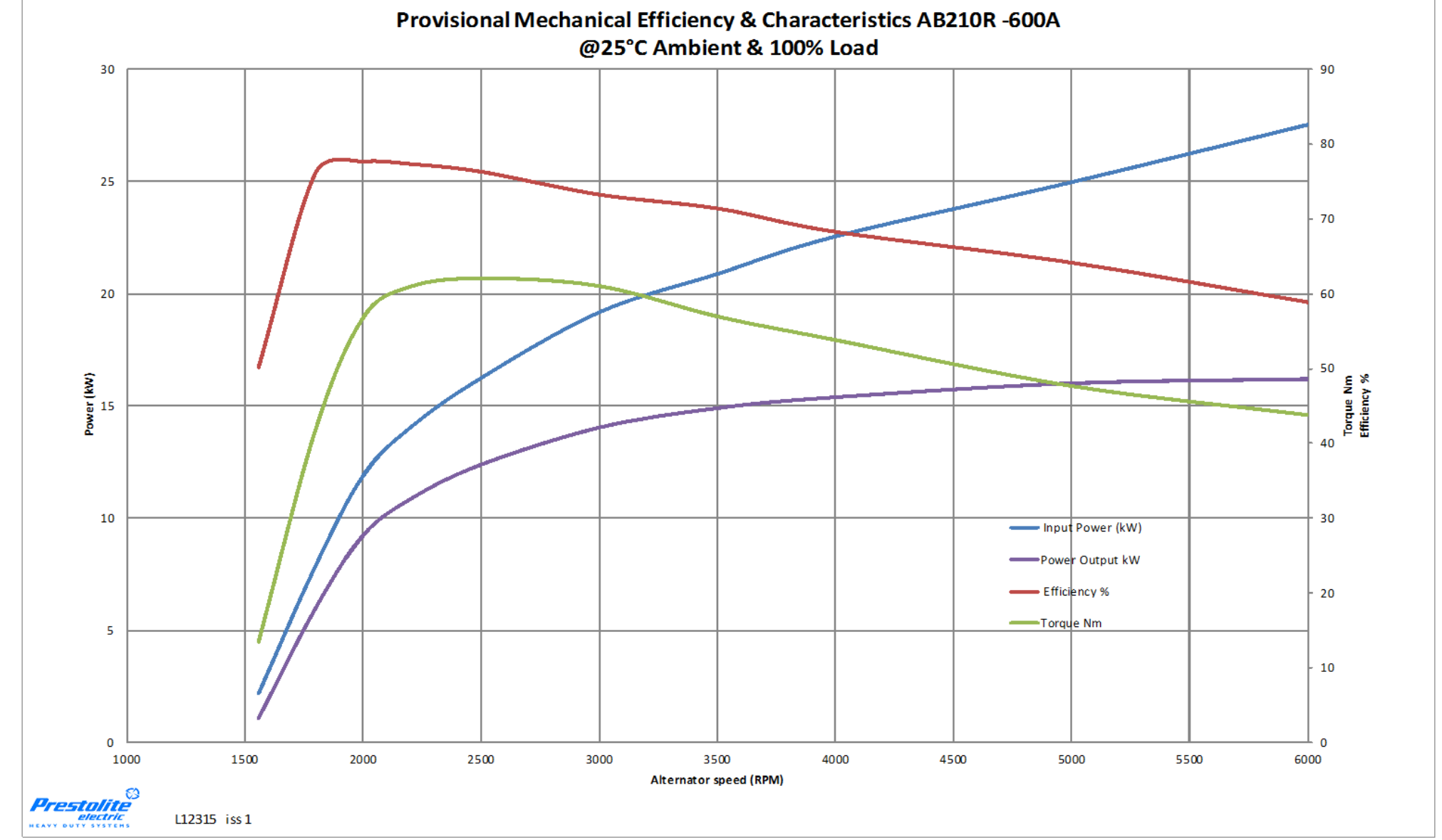
This drawing/document is copyright and the property of Prestolite Electric Ltd. It must not be copied (in whole or in part), used for manufacture or otherwise disclosed without prior written consent of the company. Any copies of this drawing/document made by any method must also include a copy of this legend.

© Prestolite Electric Ltd 2017

Prestolite Electric Ltd. - Unit 48 The Metropolitan Park 12-16 Bristol Road Greenford UB6 8UP England



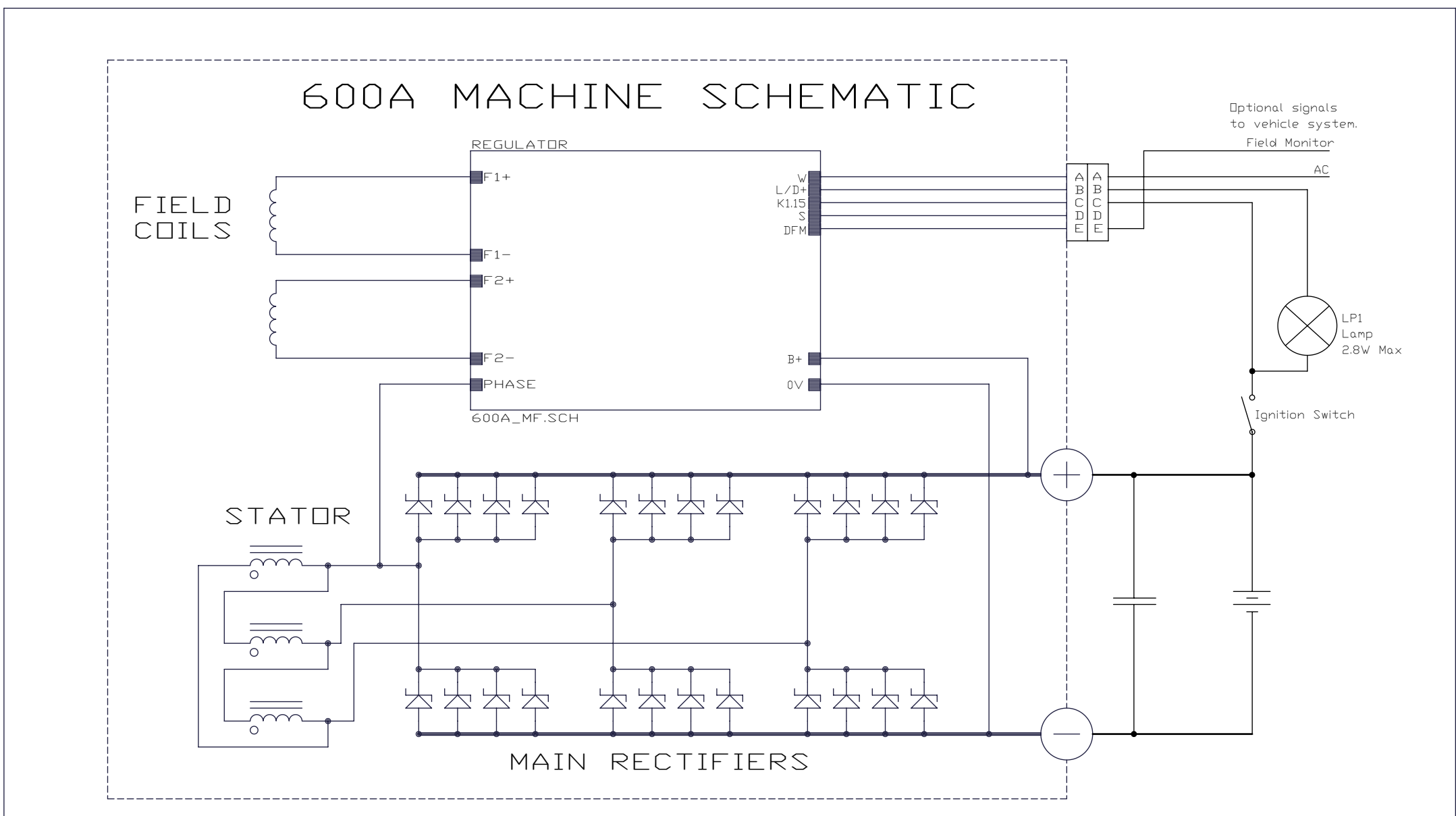
TITLE
**ALTERNATOR OUTLINE
AB210R
1287170**



ENLARGED VIEW OF AB TYPE CONNECTOR SHELL SIZE 14S-5P (PLUG) (ABBOOT 14S-5PSN) MATING SOCKET ABB06T 14S-5SSN

- CONNECTOR SIGNALS
- PIN A = W (AC) (OPTIONAL)
 - PIN B = U/D+ (RECOMMENDED)
 - PIN C = IGN(T15) (MANDATORY)
 - PIN D = S (NOT ACTIVE)
 - PIN E = DFM (OPTIONAL)

- NOTES.
1. MAXIMUM CONTINUOUS SPEED, 8000 RPM.
 2. BATTERY MASTER SWITCH MUST BE FITTED.
 3. BELT TENSION: THE RESULTANT LOAD ON THE PULLEY HUB AS SHOWN ON THIS DRAWING SHOULD NOT EXCEED 2000N.
 4. REGULATOR INTERFACE PRODUCT SPEC PS166.
 5. REGULATION VOLTAGE: 28.5V ± 0.3V (25°C, 4000rpm & 10A).
 6. TEMPERATURE COEFFICIENT: -14mV/°C ± 3mV/°C.
 7. VOLTAGE CHANGE WITH LOAD: -1V MAX. (20A TO 90% FIELD DUTY CYCLE).
 8. QUIESCENT CURRENT: <4mA (24V SUPPLY).
 9. SENSE FUNCTION (S) NOT ACTIVE.
 10. AMBIENT AIR TEMPERATURE LIMITS -40°C TO +100°C
 11. WEIGHT - 42kg
 12. ROTOR INERTIA - (EXCLUDING PULLEY) 0.088kg x Sq m.
 13. THERMAL CUTBACK AS PER SPEC PS178.



AMPS NOMINAL	VOLTS NOMINAL	DIRECTION OF ROTATION	DESPATCH NUMBER	REMARKS	DRAWING REVISION
600	24	REVERSIBLE	1287170	INSULATED RETURN	2