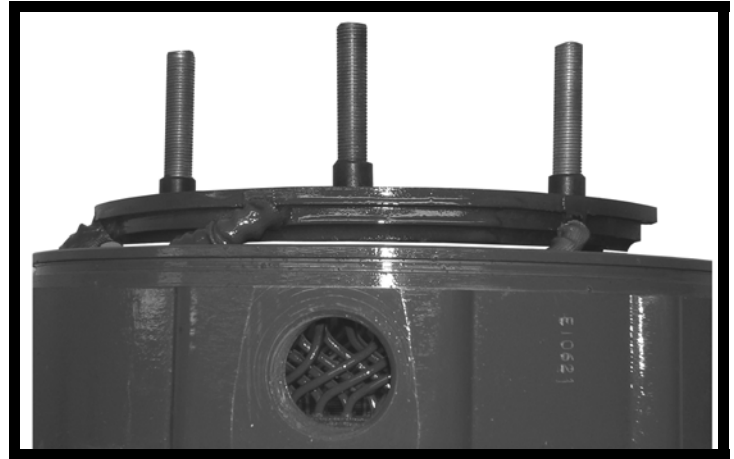
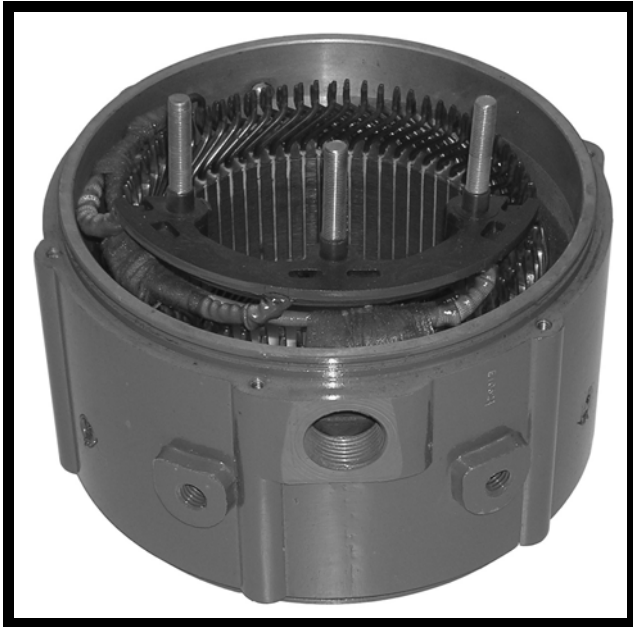




50DN STATOR—NEW INSULATOR DESIGN

ELREG #: 410-7335(NID)



FEATURES

- Solid Molded One Piece Insulator Design
- Robust Insulator Design ensures fixed terminal position
- Wrapped terminal shunts/lead wires
- Standard terminal insulator diameter

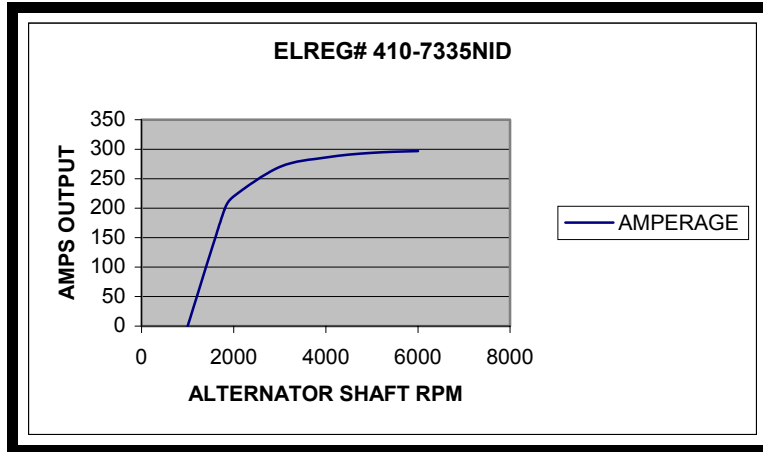
BENEFITS

- Fully encapsulates the lead wire and terminal junction (weld)
- Eliminates possibility of twisting terminal & stressing leads during assembly
- Increased strength & vibration resistance
- Less susceptible to breakage
- Reduced chance of grounding to case or windings
- No drilling of rectifier frame required - reducing assembly time

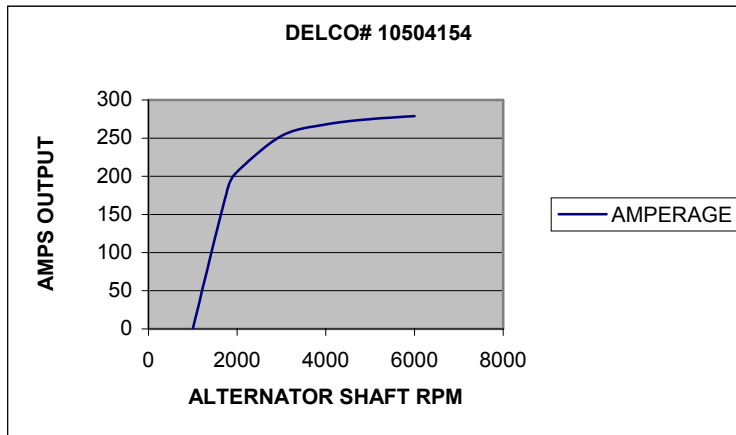




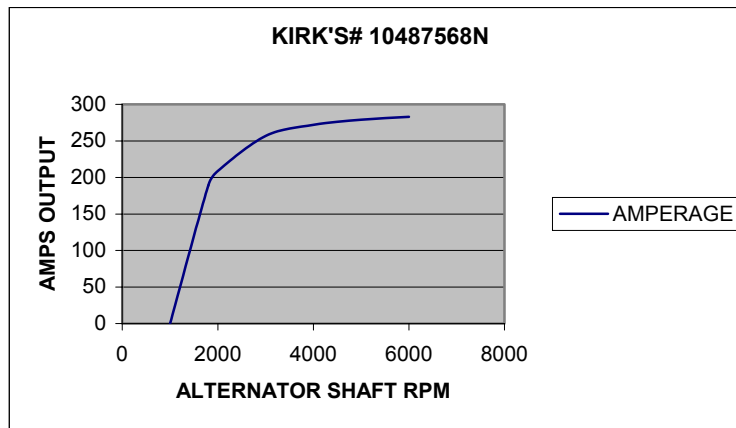
50DN STATOR OUTPUT COMPARATIVE DATA



ALTERNATOR RPM	1000	1800	2000	3000	4000	5000	6000
AMPERAGE	0	198	220	270	286	294	297



ALTERNATOR RPM	1000	1800	2000	3000	4000	5000	6000
AMPERAGE	0	186	206	253	268	275	279



ALTERNATOR RPM	1000	1800	2000	3000	4000	5000	6000
AMPERAGE	0	189	209	257	272	279	283



Canada: 3325 North Service Road, Unit 4, Burlington, Ontario L7N 3G2

U.S.A.: 60 Industrial Parkway, Cheektowaga, NY 14227

Tel: (905) 336-8830 Fax: (905) 336-8873 Toll Free: 1-800-387-4078 Toll Free Fax: 1-888-858-9317

Visit Our Web: www.elreg.com E-mail: elreg@elreg.com