



C.E. Niehoff & Co.
BRUSHLESS ALTERNATORS

C653
28 volt
260 amp

DESIGNING FOR TOMORROW'S DEMANDS

ALTERNATOR FEATURES

Air Cooled

Eliminates the need for an oil or water circulation system. No possibility of leaks, no hoses, and no waste heat transferred to the engine.

High Efficiency

High Efficiency means lower internal alternator operating temperature, resulting in longer alternator life. Less engine power needed to produce electric power means more engine power available for other needs.

Unique Brushless Construction

Elimination of rotating windings, brushes and slip rings yields durability, extends service life, eliminates arcing and reduces electromagnetic interference. (EMI)

Long Life Bearings

Special bearings system designed for extended service life in hot engine compartments.

Conformal Coating

Protects regulator and rectifier against damage from vibration and corrosion.

High Temperature Insulation and Coating

Increases durability in hot engine compartments; seals out moisture and protects against corrosion.

Regulator Features*

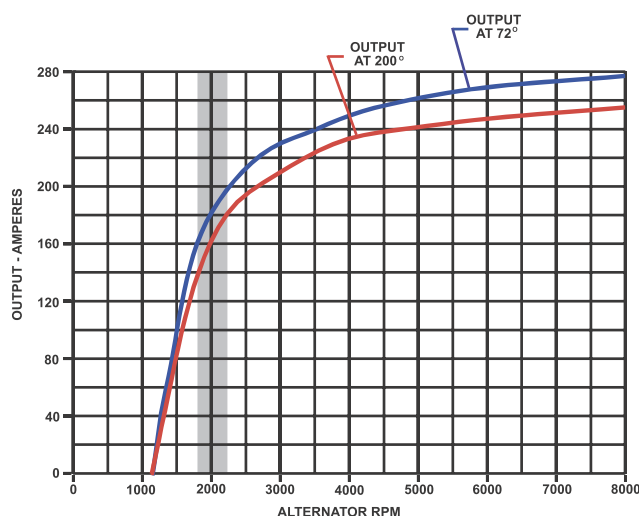
Model has R and D+ terminals to supply status to vehicle monitoring system.

Soft start protection
Overvoltage protection
Smart regulators
High reliability "Military Style" connectors
100% protected



PERFORMANCE CURVES

The measurements listed on the curves are taken at the listed ambient temperatures with a stabilized machine temperature, as per SAE J56. The shaded area highlights output available at typical engine idle alternator speed.



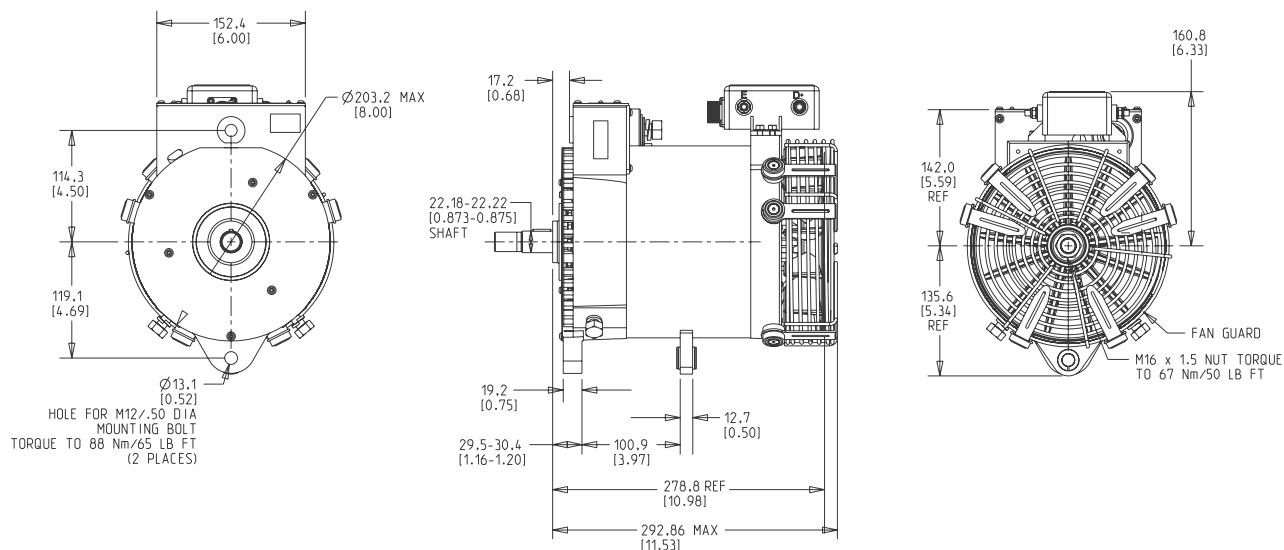
*For select regulators

C653



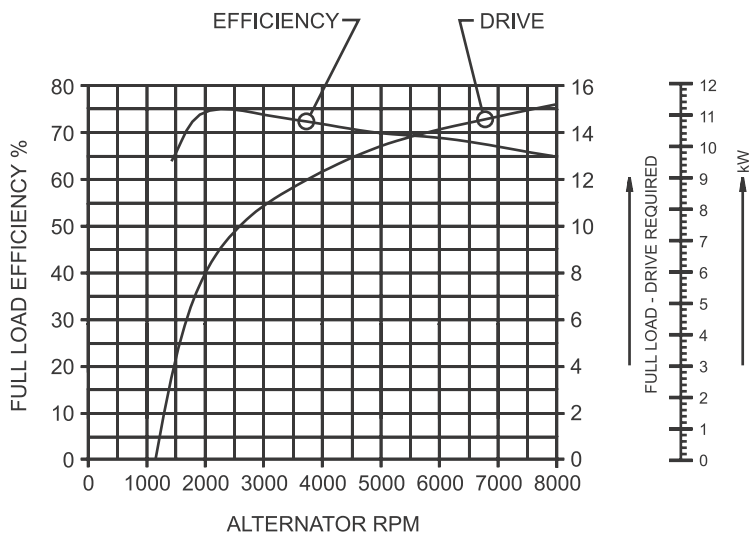
C653
28 volt
260 amp

DIMENSIONS



Linear Measure mm [IN]

HORSEPOWER AND EFFICIENCY CURVES



C.E. Niehoff & Co.
 2021 Lee Street.
 Evanston, IL 60202
 Phone: 847/866-6030
 Fax: 847/492-1242
 E-mail: sales@CENiehoff.com



C.E. Niehoff & Co.
BRUSHLESS ALTERNATORS

www.CENiehoff.com

C653