



# Hazardous location, Flameproof brushless alternators.

United States Coast Guard compliance for class 1 zone 1 applications.

ATEX and IEC Ex IIB Certified.

Meets:

IEC 60079-0 and 60079-1

CE0518

Ex d IIB 100°C Gb Tamb -40°C to +40°C

Ex d IIB T3 Gb Tamb -40°C to +93°C

IECEX SIR 09.0144X

II 2G

Sira 09ATEX1345X

8500 Rpm MAX

Large sealed bearing design for heavy industrial engines.

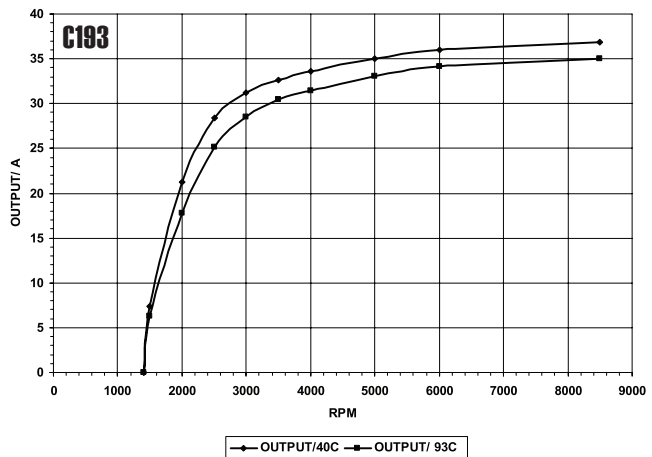
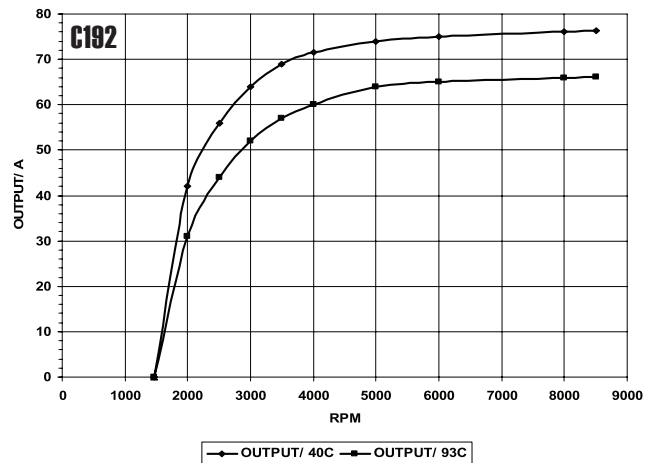
Internally rectified and regulated.

Optional rear housing exit cable locations.

Clocking rear housing for custom cable options.



## 14/28 volt 70/35 amp **C190** series



ALL MEASUREMENTS DEPICTED ON PERFORMANCE CURVES ARE TAKEN AT 40°C/104°F AMBIENT TEMPERATURE (UNLESS OTHERWISE SPECIFIED) AND A STABILIZED MACHINE TEMPERATURE AT MAXIMUM OUTPUT WITH VOLTAGE CONSTANT AS SPECIFIED.

### Specifications

c192 14 volt 70 amp 980 watts

SAE J180 4" hinge mount

c193 28 volt 35 amp 980 watts

IEC 332-3 or NEK606 cable options

### Accessories

Cable

Fan pulley

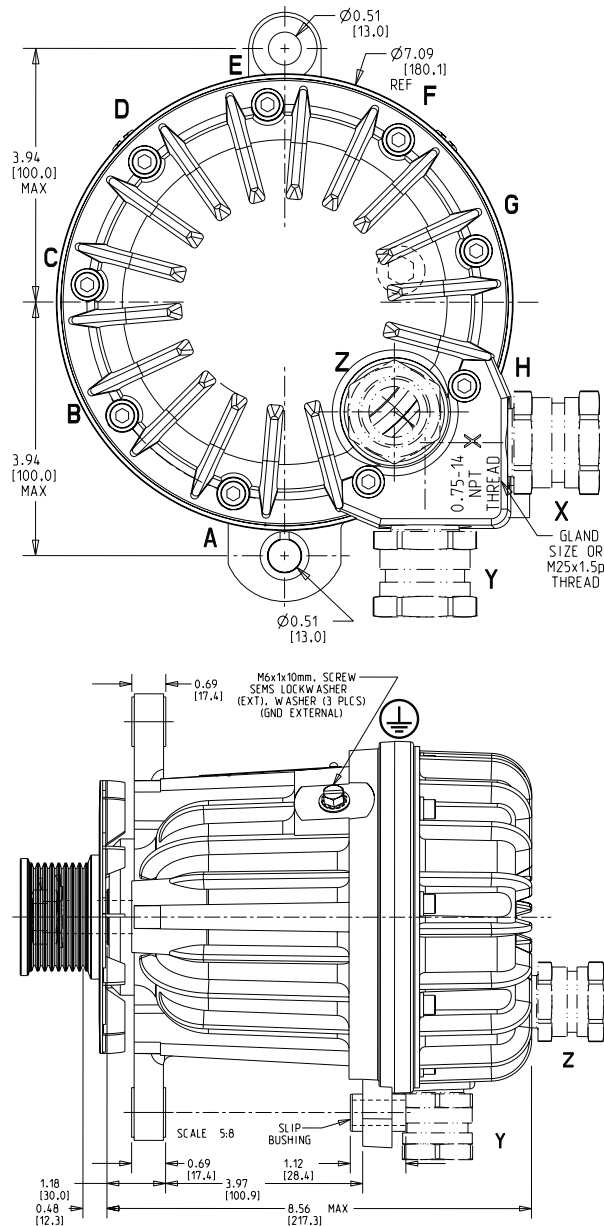
Gland

**C.E. Niehoff & Co.**  
CHARGING AND POWER MANAGEMENT SYSTEMS

# C190 series 14/28 volt 70/35 amp



## Dimensions



Gland options are for reference only.  
Please contact CEN for cabling, gland,  
and fan pulley options.

For inquiries call 847-866-6030  
contact [sales@ceniehoff.com](mailto:sales@ceniehoff.com)  
visit us at [www.CENiehoff.com](http://www.CENiehoff.com)  
2021 Lee St. Evanston IL, 60202 USA



**C.E. Niehoff & Co.**  
CHARGING AND POWER MANAGEMENT SYSTEMS

LIT-C190SS-0512